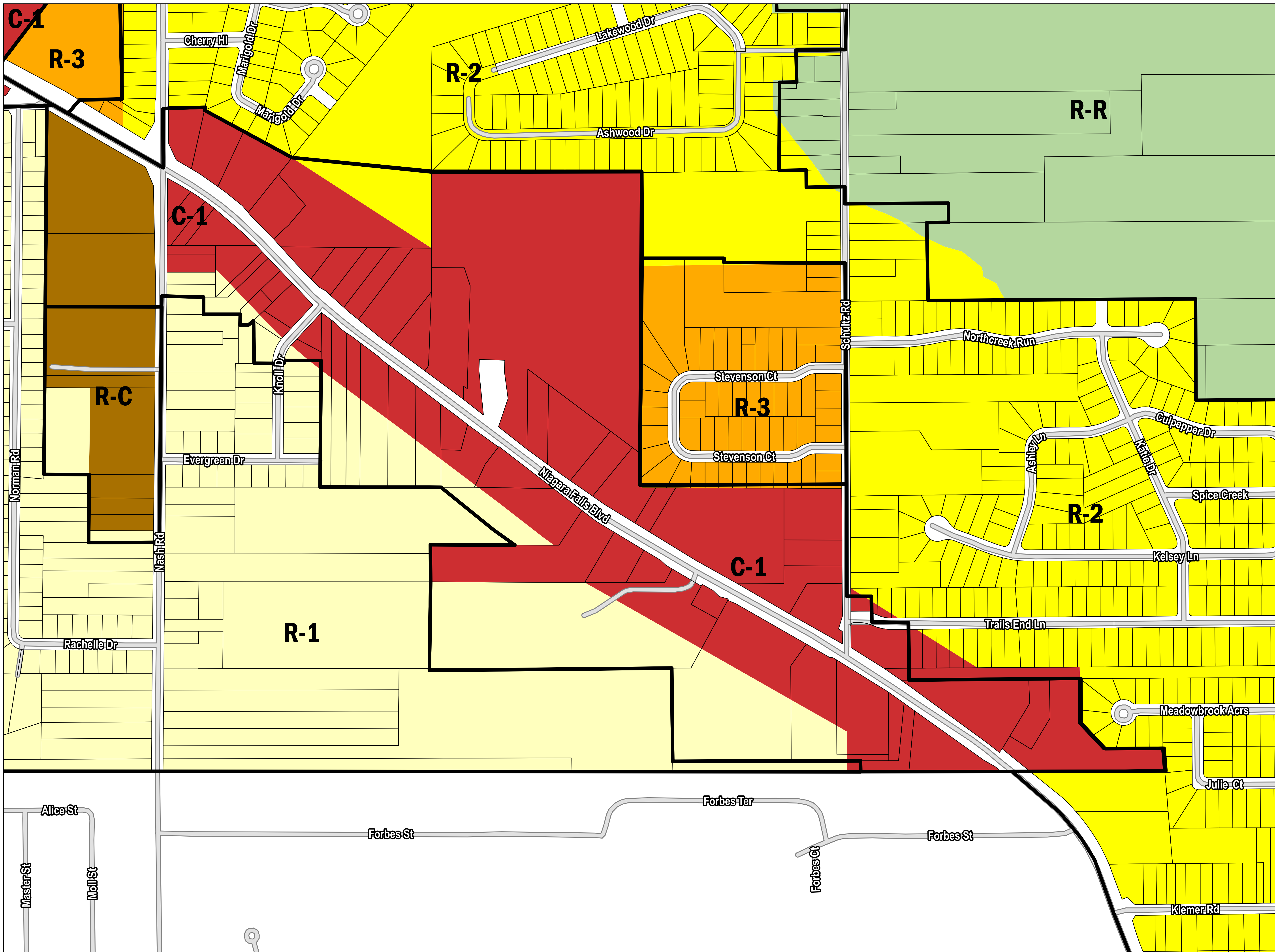
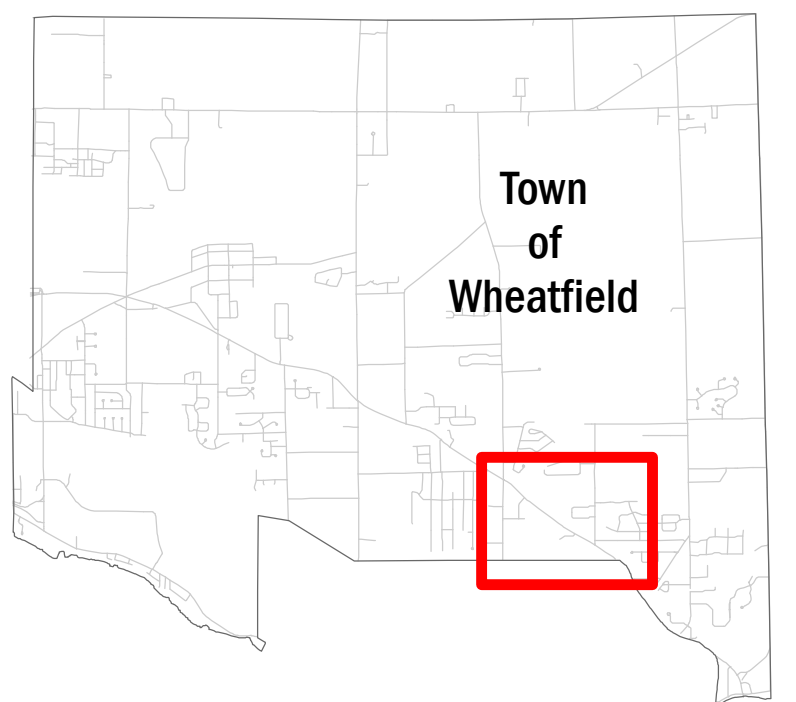
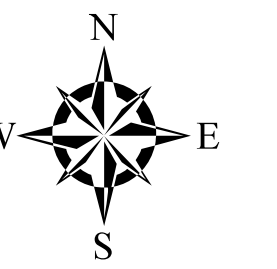
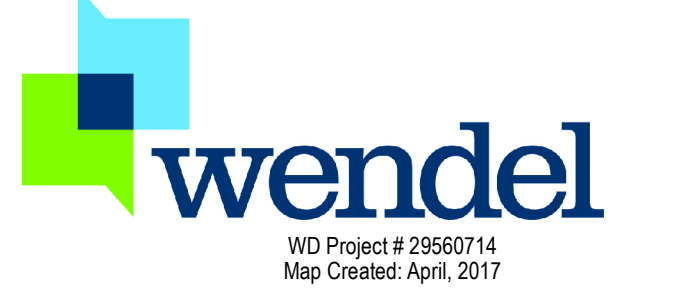
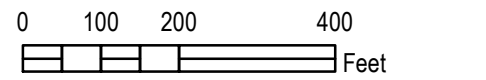


TOWN OF WHEATFIELD
Proposed Rezoning Area 3



LEGEND

	Parcel Boundary (2016)
Proposed Zoning	
	C-1, Commercial
	PUD, Planned Unit Development
	R-1, Residential - 1
	R-2, Residential - 2
	R-3, Residential - 3
	R-C, Restricted - Commercial
Existing Zoning	
	C-1, Commercial
	R-1, Residential-1
	R-2, Residential-2
	R-3, Residential-3
	R-C, Restricted-Commercial
	R-R, Rural-Residential



Wendel Duchesneer Architects & Engineers, P.C. shall assume no liability for 1. Any errors, omissions, or inaccuracies in the information provided regardless of how caused or; 2. Any decision or action taken or not taken by the reader in reliance upon any information or data furnished hereunder. Data Sources: Niagara County Real Property Services, Town of Wheatfield.