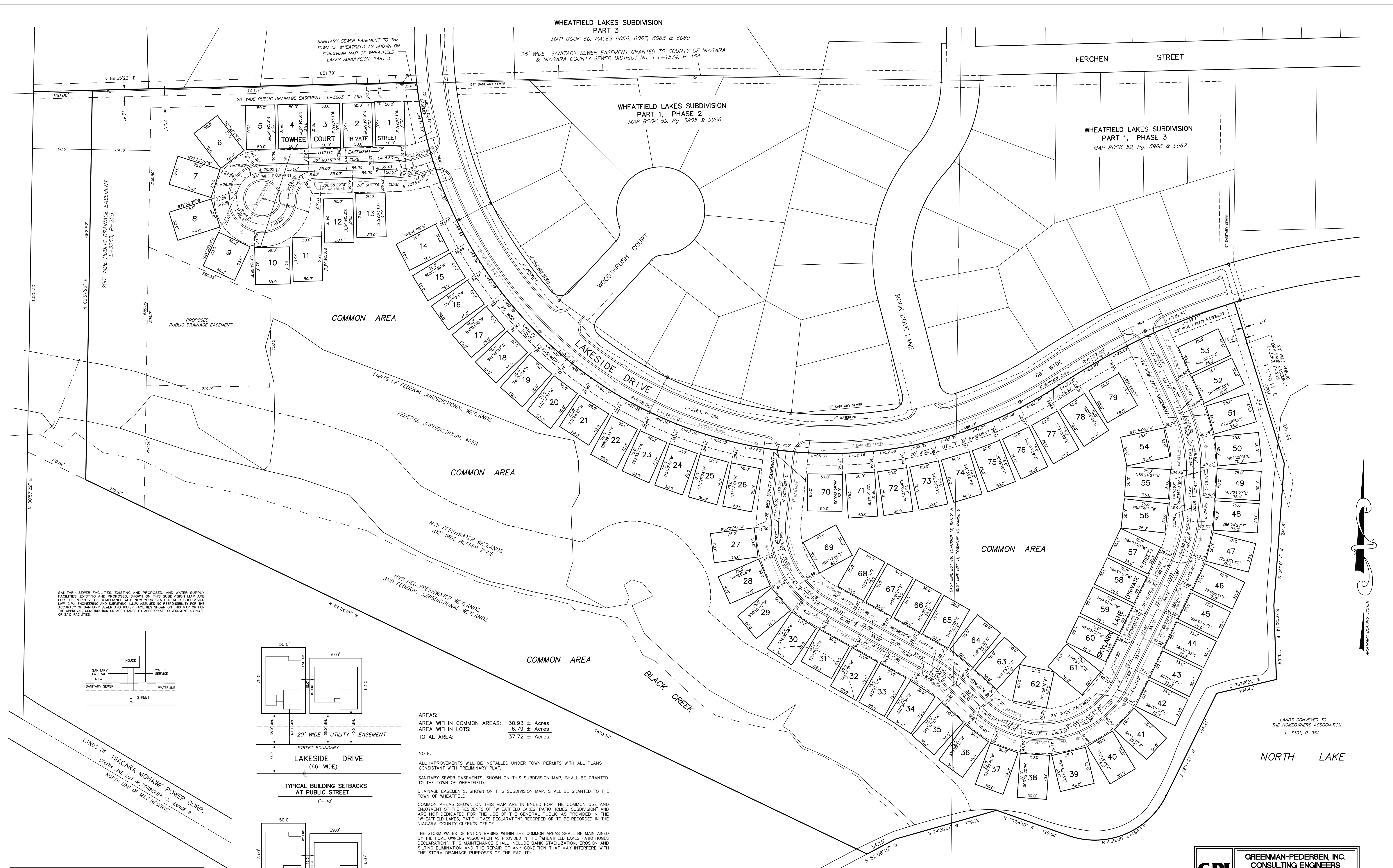


WHEATFIELD LAKES SUBDIVISION  
PART 3  
MAP BOOK 60, PAGES 6066, 6067, 6068 & 6069  
25' WIDE SANITARY SEWER EASEMENT GRANTED TO COUNTY OF NIAGARA  
& NIAGARA COUNTY SEWER DISTRICT No. 1 L-1574, P-154

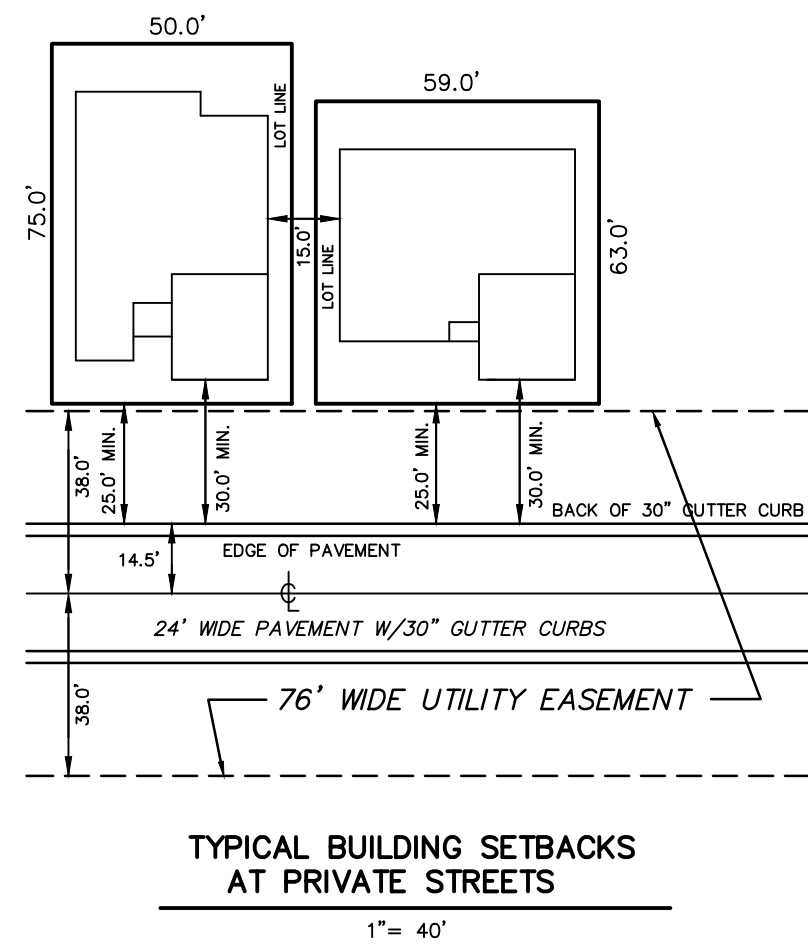
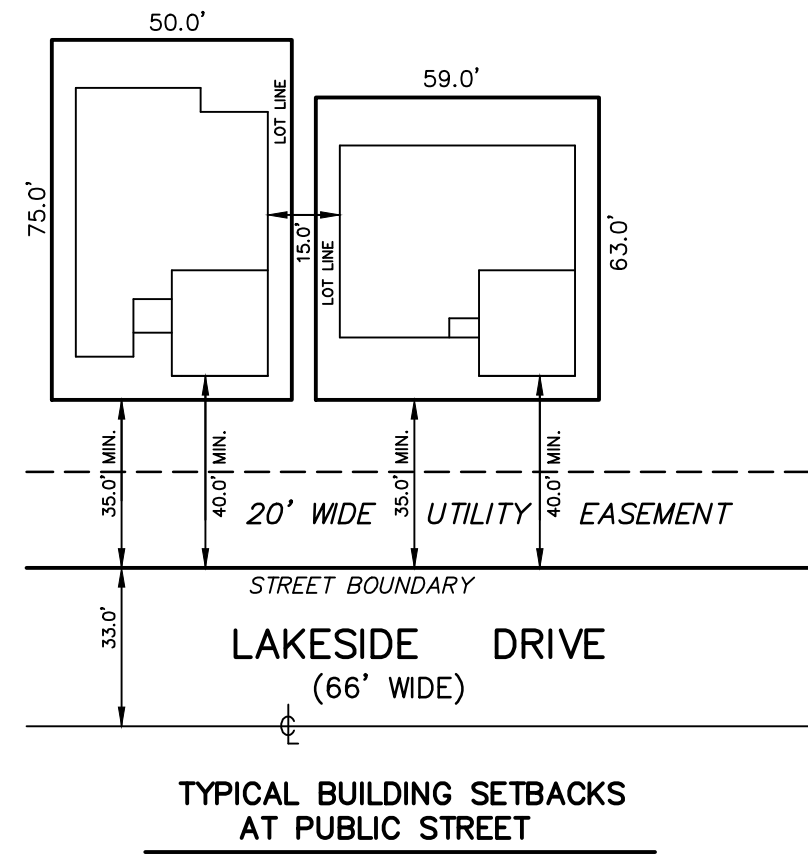
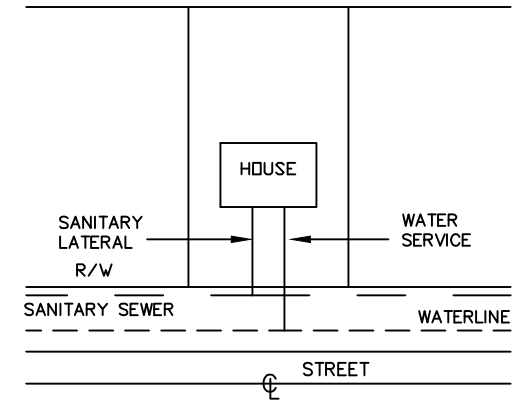
WHEATFIELD LAKES SUBDIVISION  
PART 1, PHASE 2  
MAP BOOK 59, Pg. 5905 & 5906

FERCHEN STREET

WHEATFIELD LAKES SUBDIVISION  
PART 1, PHASE 3  
MAP BOOK 59, Pg. 5966 & 5967



SANITARY SEWER FACILITIES, EXISTING AND PROPOSED, AND WATER SUPPLY FACILITIES, EXISTING AND PROPOSED, SHOWN ON THIS SUBDIVISION MAP ARE FOR THE PURPOSE OF COMPLIANCE WITH NEW YORK STATE HEALTH SUBDIVISION LAW § 21. ENGINEERING AND SURVEYING, L.L.P. ASSUMES NO RESPONSIBILITY FOR THE ACCURACY OF SANITARY SEWER AND WATER FACILITIES SHOWN ON THIS MAP OR FOR THE APPROVAL, CONSTRUCTION OR ACCEPTANCE BY APPROPRIATE GOVERNMENT AGENCIES OF SAID FACILITIES.



AREAS:  
AREA WITHIN COMMON AREAS: 30.93 ± Acres  
AREA WITHIN LOTS: 6.79 ± Acres  
TOTAL AREA: 37.72 ± Acres

NOTE:  
ALL IMPROVEMENTS WILL BE INSTALLED UNDER TOWN PERMITS WITH ALL PLANS CONSISTANT WITH PRELIMINARY PLAT.  
SANITARY SEWER EASEMENTS, SHOWN ON THIS SUBDIVISION MAP, SHALL BE GRANTED TO THE TOWN OF WHEATFIELD.  
DRAINAGE EASEMENTS, SHOWN ON THIS SUBDIVISION MAP, SHALL BE GRANTED TO THE TOWN OF WHEATFIELD.  
COMMON AREAS SHOWN ON THIS MAP ARE INTENDED FOR THE COMMON USE AND ENJOYMENT OF THE RESIDENTS OF "WHEATFIELD LAKES, PATIO HOMES, SUBDIVISION" AND ARE NOT DEDICATED FOR THE USE OF THE GENERAL PUBLIC AS PROVIDED IN THE "WHEATFIELD LAKES, PATIO HOMES DECLARATION" RECORDED OR TO BE RECORDED IN THE NIAGARA COUNTY CLERK'S OFFICE.  
THE STORM WATER DETENTION BASINS WITHIN THE COMMON AREAS SHALL BE MAINTAINED BY THE HOME OWNERS ASSOCIATION AS PROVIDED IN THE "WHEATFIELD LAKES PATIO HOMES DECLARATION". THIS MAINTENANCE SHALL INCLUDE BANK STABILIZATION, EROSION AND SILTING ELIMINATION AND THE REPAIR OF ANY CONDITION THAT MAY INTERFERE WITH THE STORM DRAINAGE PURPOSES OF THE FACILITY.

PURSUANT TO CHAPTER 605 OF THE LAWS OF 1985, I HEREBY CERTIFY THAT THIS SUBDIVISION MAP WAS PREPARED UNDER MY DIRECTION AND THE OUTBOUNDS SURVEY OF THE PREMISES CONTAINED WITHIN SAID SUBDIVISION WAS PREPARED UNDER MY DIRECTION AND IS SHOWN ON A SURVEY WITH JOB No. 263-1, DATED DECEMBER 18, 2002.

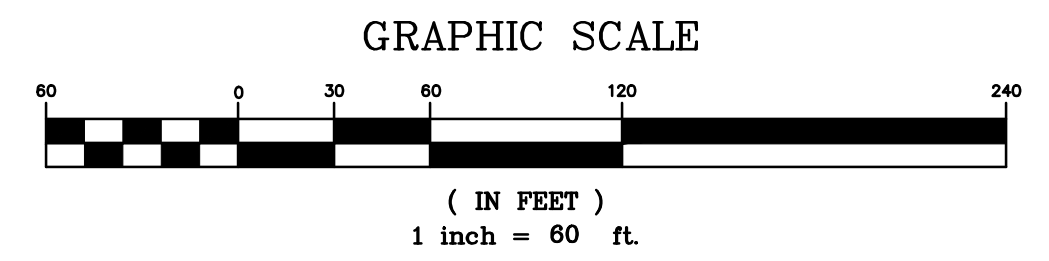
RICHARD A. HUTH, L.S.  
TOTAL SUBDIVISION AREA: 37.72 ± Acres.  
NOTE: UNAUTHORIZED ALTERATION OR ADDITION TO THIS DOCUMENT IS A VIOLATION OF SECTION 7209 PROVISION 2 OF THE NEW YORK STATE EDUCATION LAW.

APPROVED BY THE TOWN CLERK OF THE TOWN OF WHEATFIELD, NIAGARA COUNTY, NEW YORK:  
TOWN CLERK: \_\_\_\_\_ DATE: \_\_\_\_\_  
APPROVED BY THE TOWN OF WHEATFIELD PLANNING BOARD:  
CHAIRPERSON: \_\_\_\_\_ DATE: \_\_\_\_\_  
FILED IN THE NIAGARA COUNTY CLERK'S OFFICE IN MICROFILM MAP BOOK \_\_\_\_\_, PAGE \_\_\_\_\_, SLIDE No. \_\_\_\_\_

FINAL PLAT OF  
**WHEATFIELD LAKES PATIO HOMES  
SUBDIVISION**

BEING WITHIN A PLANNED UNIT DEVELOPMENT (P.U.D.)  
TOWN OF WHEATFIELD, NIAGARA COUNTY, NEW YORK  
BEING PART OF LOTS 41 AND 46, TOWNSHIP 13, RANGE 8, HOLLAND LAND SURVEY

**GPI** GREENMAN-PEDERSEN, INC.  
CONSULTING ENGINEERS  
ENGINEERING • SURVEYING • PLANNING  
4950 GENESSEE STREET SUITE 165 BUFFALO, NY 14225  
(716) 633-4844 FAX (716) 633-4940



JOB No. 98057-12 DATE: OCTOBER 10, 2007